

## Installation Instructions

### 1. Surface Preparation

Ensure all surfaces to be coated are clean, free of dust, debris, and oils. Thoroughly clean the Galvanised Steel Purlin using a green scouring pad and Isopropyl Alcohol.

### 2. Primer Application

Once the Purlin has dried, using a brush apply PaintPlus Galv Coat to the areas of the purlin that will be coated with FBL-100.

### 3. Ceramic Fibre

Once the primer has dried, install the Ceramic fibre inside the cavity left by the Purlin. The Ceramic Fibre should be approx. 3 times the height of the Purlin, and at least as thick as the wall.

### 4. Pattress

Once the Primer has cured, cut the pattress into pieces and friction fit to the purlin and screw off using 41mm x 6g GID Grabber Screws.

### 5. GIB Fire Soundseal

Fill any annular gap less than 5mm, and any joints in the pattress with GIB Fire Soundseal

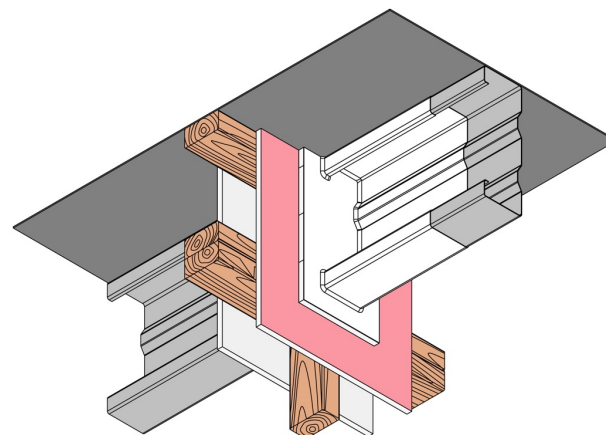
### 6. FBL-100

When GIB Fire Soundseal has dried, apply FBL-100 by brush until the last tooth of the WFT Comb provided has paint on it.

### 7. Topcoat

Tech Coatings recommends using a high-quality topcoat from a reputable supplier. This will protect FBL-100 from any unforeseen environmental or mechanical damage.

Paint the entire pattress and paint the steel purlin to 300mm from the wall.



#### Notes:

These drawings are for site example only. The performance of any fire rated system is dependent on, but not limited to the fire separating element, size of aperture, the cross-sectional size of penetration. Please refer to the Technical Data Specification for more detailed information or contact the Tech Coatings Technical department.

[www.techcoatings.co.nz](http://www.techcoatings.co.nz) – [technical@techcoatings.co.nz](mailto:technical@techcoatings.co.nz) – +64 21 352 490

## Tech Coatings Fire Rated Systems

**System:** PenoLock  
**TDS:** PTR-NLS60  
**Approval:** AS1530.4:2014  
**Report #:** FTSL-PF23016  
**FRR:** --/60/60

### Fire Separating Element(s):

116mm thick, timber framed, plasterboard wall with an FRR of 60/60/60

### Penetration(s) Type:

Steel C Section purlin

### Size(s):

200mm, 250mm, 300mm, 350mm, 400mm

### Materials

FBL-100 Intumescent Coating  
 PaintPlus Galv Coat  
 Ceramic Fibre  
 GIB 13mm Fyreline Pattress  
 GIB Fire Soundseal  
 GIB 41mm x 7g GIB grabber screws

#### Please note:

Tech Coatings NZ Limited Ltd owns and has copyright on these drawings. They are to be used only for the purpose for which they were intended and supplied and are not to be sold, transferred, or made available for use by a third party. Any misuse of these drawings will result in legal proceedings.

<b>Scale:</b> NTS	<b>Date:</b> 07 September 2023
<b>Sheet Size:</b> A3	<b>Prepared by:</b> Shane Wyatt
<b>TDS Number:</b> PTR-NLS60	<b>Version:</b> 3.1